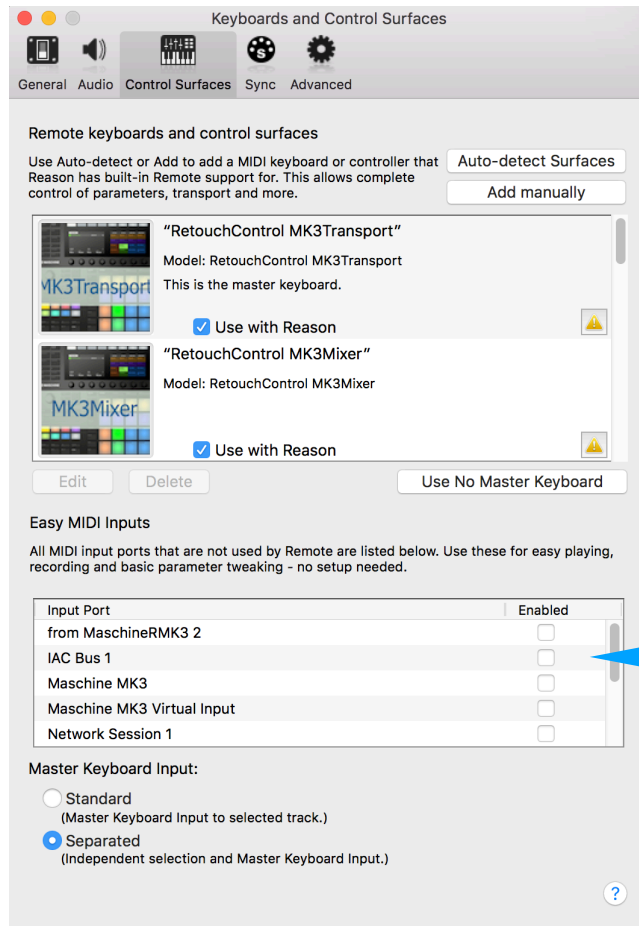


30.09.18

We are happy to announce that all of our products are compatible with the latest version of Reason 10.2. However, it's important that the midi ports for your Retouch application and hardware controller are disabled in the new "Easy MIDI Input" field under Control Surfaces in Preferences. If you don't disable these ports, the application won't work properly and you are going to experience some odd behaviors.

The screenshot below shows an example for the MaschineRMK3 application. Notice, both the MaschineR ports and the Maschine controller ports have all been disabled



Disable all the MIDI ports from the *Retouch application* and the *hardware controller* you are using

In this example, both the MaschineR ports and the Maschine controller ports are disabled